



MONEAGUE COLLEGE

UNIFORM REGULATIONS

This document represents the official uniform guideline for students of the Moneague College. All full time students of the institution are required to wear uniform. Once a student has accepted the offer to study at the institution on a full time basis, this student automatically accepts the rules and regulations governing the uniform worn by students. Students are expected to wear the official college uniform Mondays to Fridays during regular class time 8:00 am 5:30pm and at special functions stipulated by the institution. Anything other than the official uniform of the institution must be approved by the college's administration before it can be worn to classes.

The uniform is a public symbol of the Moneague College. Students in uniform must be cognizant of the tremendous responsibilities to past, present and future students to maintain excellence by displaying appropriate conduct; ever upholding the motto of the institution, "**Soaring to the Heights of Excellence**".

UNIFORM MATERIAL

- Navy Blue Matt linen
 - Baby blue cotton
 - Baby blue NuVella Linen for dresses and female bush jackets only
 - White cotton (for blouses and shirts only)
- There is no distinction made in uniform between the two major schools in the college- Teacher Education and CCCJ. The programmes will be distinguished by the colour that surrounds the circumference of the crests.
- The colour of the uniform is Navy Blue and Baby Blue, with the option to wear white shirts by male students and white blouses by female student.
- All uniform materials except the white cotton are sold at the college. The college also sells the, sweater vests, blue cotton blouses, and shirts and bush jackets, also ties for males and crests for all students.

Uniform Options -Females

- Option A- Skirt, vest and Blouse
- Option B- Baby blue dress with scarf
- Option C- Blazer, Blouse and Skirt (or pants)
- Option D- Vest, Blouse and Pants
- Option E- Bush Jacket and Pants
- Option F- Bush Jacket and Skirt

Please note that female students are no longer allowed to wear blouses and skirts and blouses and pants only as uniform, it must be accompanied by a vest.

All female students are required to make a blazer (Navy Blue) which can be worn with any of the uniform options except, bush jacket. (worn at official college functions, work experience, and when representing the college) All buttons on female student clothing, (excepting blouses) must be covered in the solid fabric making the item of uniform.

Uniform Options –Males

- Option A- Bush Jacket and Pants
- Option B- Blazer, Pants, Shirt and Tie
- Option C- Pants, shirt and Tie
- Option D- Pants, shirt, Tie, Sweater Vest

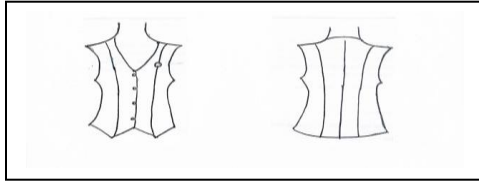
Please note that male students are no longer allowed to wear the shirt and pants alone as uniform, it must be accompanied by a tie. The sweater vest is also worn with a tie.

All male students are required to make a blazer- (Navy Blue) which is to be worn with a shirt and a tie.

UNIFORM SPECIFICATIONS- FEMALE STUDENTS

VEST

Vests are made from the material of which the skirts or pants are made. (see diagram below) It must be made to fit evenly over the waist of the skirt or pants. It has four buttons covered in the same solid fabric as the skirt or pants. The vest should have a crest sewn over the left breast section.



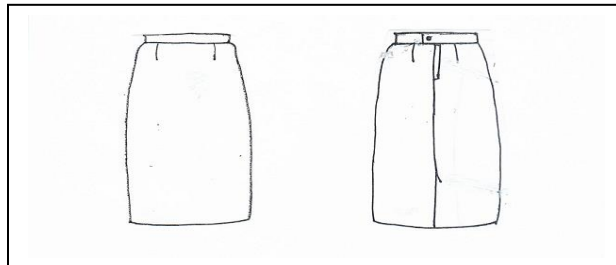
BLOUSE

The recommended blouse is the short or long sleeve shirt blouse. It is made of cotton material- blue or white. The blouses are to be tucked into the skirts or the pants. (no puff sleeve, round or sailor collars)



SKIRTS

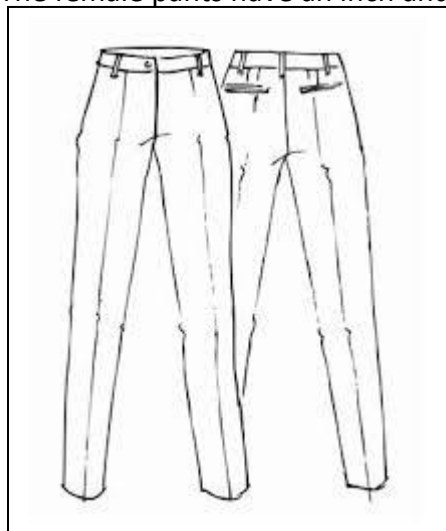
The uniform skirt is the regular straight skirt. It has a 6in lap split to the back, a 6in zipper below the belt at the back, no loops or belt. The skirt has an inch and a half $1\frac{1}{2}$ waist band and hem line. The waist is kept together by a button at the back. The skirt must be made to fit 1 inch below the knees and should have enough space for free movement or for future growth. Please note that students are not allowed on the compound wearing tight skirts or short skirts. Please note that the skirt does not have pockets, open split, gores, or belt. (see diagram below). The skirts are made of navy blue matt linen material.



PANTS

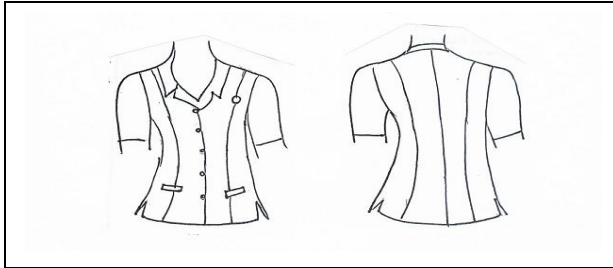
Students are expected to make tailored pants with adequate room for free movement and future growth. The female pants do not have back or front pockets loops or a belt. Pants are made to be seamed. The width of the mouth of each pant foot should be at least 17 inches. The female pants have an inch and a half waist band and are made of navy blue matt linen.

Tight pants are not allowed on the compound.



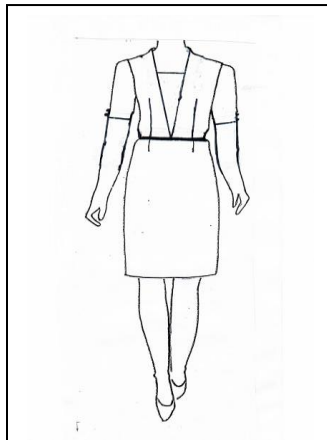
FEMALE BUSH JACKETS

Female jackets are sold at the college. Do not purchase the jackets from any other source. Please purchase the correct size to fit your body and do not alter it. Female Bush Jackets come in baby blue colour.



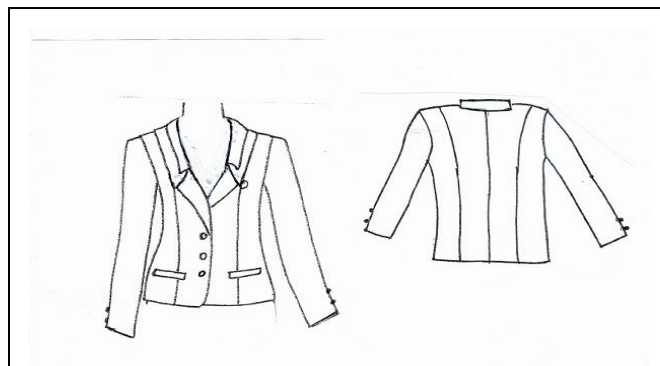
THE DRESS

The dress is made of navy blue linen with a baby blue V inset to the waistline (the V should be 6ⁱⁿ across) and a 1^{1/2} inch inset band in the waistline made of the baby blue material. The V inset must be high enough to cover the entire breast. It has a (½) half sleeve that fits into the elbow, with two covered buttons (baby blue) at the end of each sleeve. The buttons are covered with the baby blue material. It has a 6 inch lap split to the back and a 15 inch zipper to the back running through the waist, two darts to the back and two to the front. The dress is made to fit 1 inch below the knee. The dress should have the college crest over the left breast. (The dress has the regular A line bodice and skirt in one).



BLAZER

Students are required to make a blazer, these are especially required for formal functions that students are required to attend, on occasions when students represent the college or on practicum exercises. Students may also wear these blazers to school, if they so desire. (see diagram below) . The blazers are made from navy blue linen material. The female blazer has covered buttons made from the same solid fabric as the blazer itself.



UNIFORM SPECIFICATIONS- MALE STUDENTS

SHIRTS

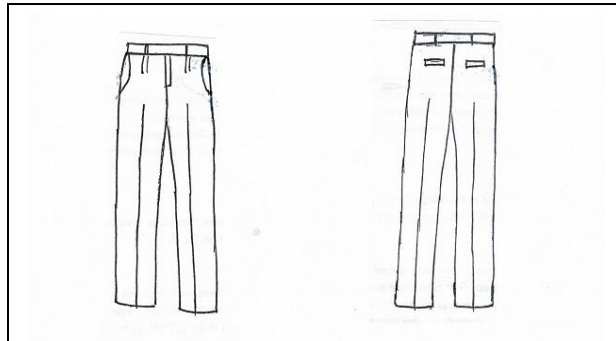
Male students are required to wear the regular short or long sleeved shirts in the required colours- baby blue or white. The shirts are made from cotton. The recommended ties are sold at the college.

BUSH JACKETS

These jackets are sold at the college. Do not purchase them elsewhere. Male bush jackets come in white and blue.

PANTS

Male students are required to wear tailored navy blue matt linen pants with adequate room for growth and movement. The mouth of each pant foot must be at least 17 in wide. Students are warned not to buy “ready-made” pants as you are not likely to get the correct uniform. Pants are worn with a black leather belt. Students wearing tight pants will not be allowed on the compound.



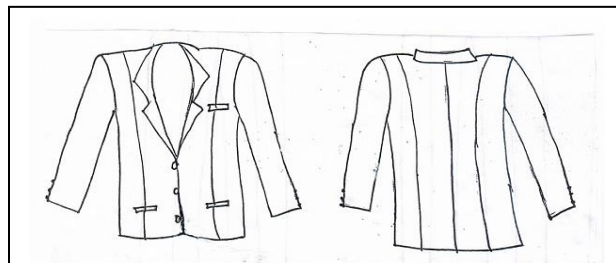
Please note that jeans and pants made of silky material are not considered to be uniform.

SWEATER VESTS-

Sold at college **NB. Only male students are allowed to wear the sweater vest.**

BLAZER

Male students are required to make a blazer, these are specially required for formal functions that students are required to attend or for practicum exercise. Students may also wear these blazers to school if they so desire. The blazers are made from the navy blue matt linen material.



GENERAL INFORMATION ABOUT UNIFORM

General

- Female students will no longer be given the option to wear the pants and blouse only, or the skirts and blouse only. Male students who chose to wear the pants and shirt must wear a tie.
- Students choosing to wear the sweater vest must also wear a tie
- Students have the options to wear a long or a short sleeve blouse (females) or shirt (Males).

Headwear

- Hair accessories for female students must be black or navy blue only. (No head bands)
- Hair colour will be neutral tones, earth colours or the colour of the skin
- No more than two colours should be in the female hair, inclusive of their natural hair colour.
- All males should have their hair properly groomed- (no corn row or plaited hair style)

- No hair designs on the scalp

Earrings + Jewellery

- Male students are not allowed to wear earrings while in uniform, or while on the compound
- Females will wear one pair of earring on the lower lobe that is no more than one inch in diameter (no more than one earring in each ear)
- Female students will not wear beads around their neck
- Only a single, gold, silver or bronze chain can be worn (no more than 2mm in width)
- Students must wear only one set of rings.
- Students may wear only a watch on their wrist
- No tongue, nose, or upper earlobe rings, rings above the eyelids, or on other visible parts of the body, excepting the ear, may be worn

Shoes

- The colour shoes that may be worn is black or navy blue for female students and black for males
- No crepes, sneakers (shoes made of cloth or cloth-like materials)
- No socks for females
- No boots
- No anklets
- No open toe shoes for females
- Shoes must be plain and without additional colours
- No hats for males or females
- Black or navy blue socks for males

Belt

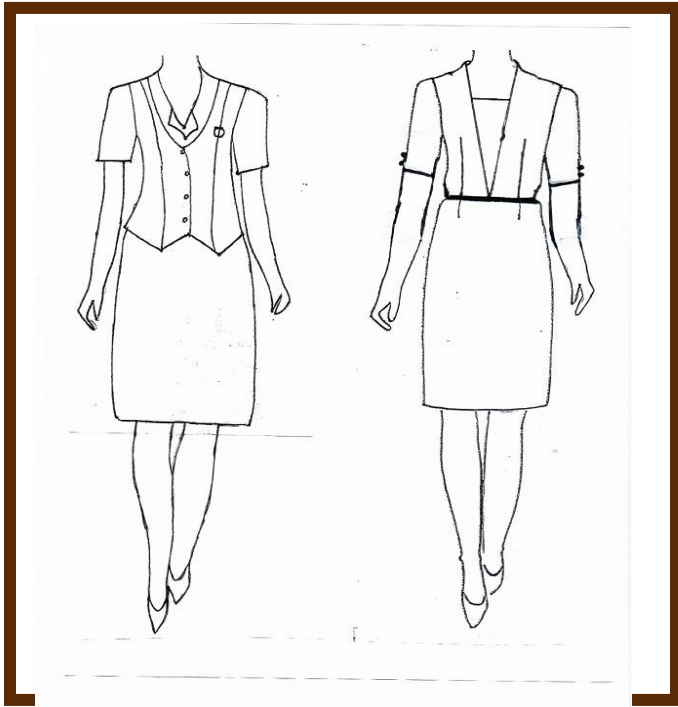
- Plain black belt for males

THE FOLLOWING ARE CONSIDERED BREACHES OF THE MONEAGUE COLLEGE UNIFORM CODE.....

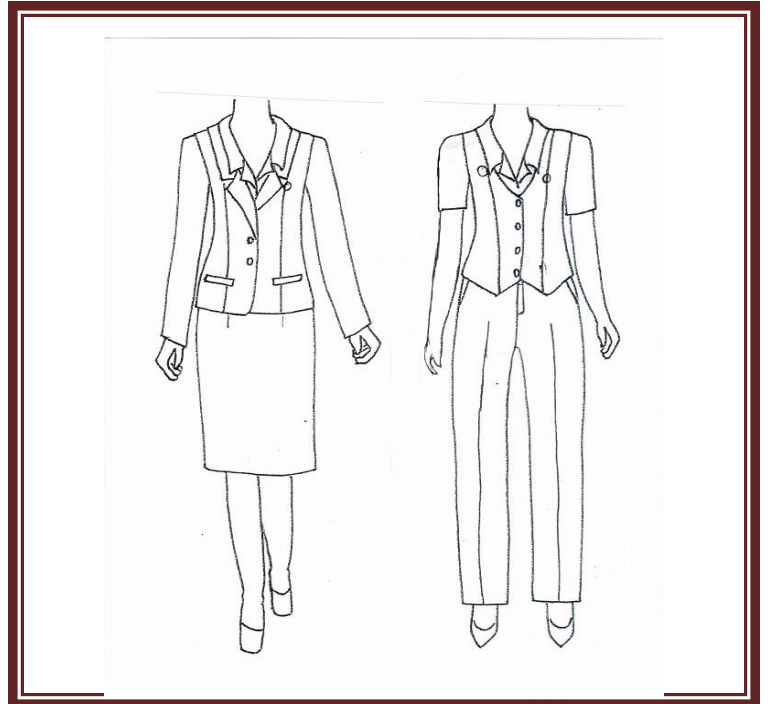
- Earring for males
- Very short or tight skirts for females
- Very tight pants for males and females
- Coloured shoes
- Slippers, sneakers and crepes
- Coloured belts for males
- Blouses/shirts worn outside of skirts and pants
- Shirts worn outside of pants
- Females wearing ties/sweater vests
- Jeans /T shirts
- Bright coloured braids and hair pieces
- Coloured hair accessories
- Uniform colours other than, baby blue, navy blue
- Hats, head bands
- No tattoos on exposed parts of the body
- Socks for female students

UNIFORM OPTIONS –FEMALE STUDENTS

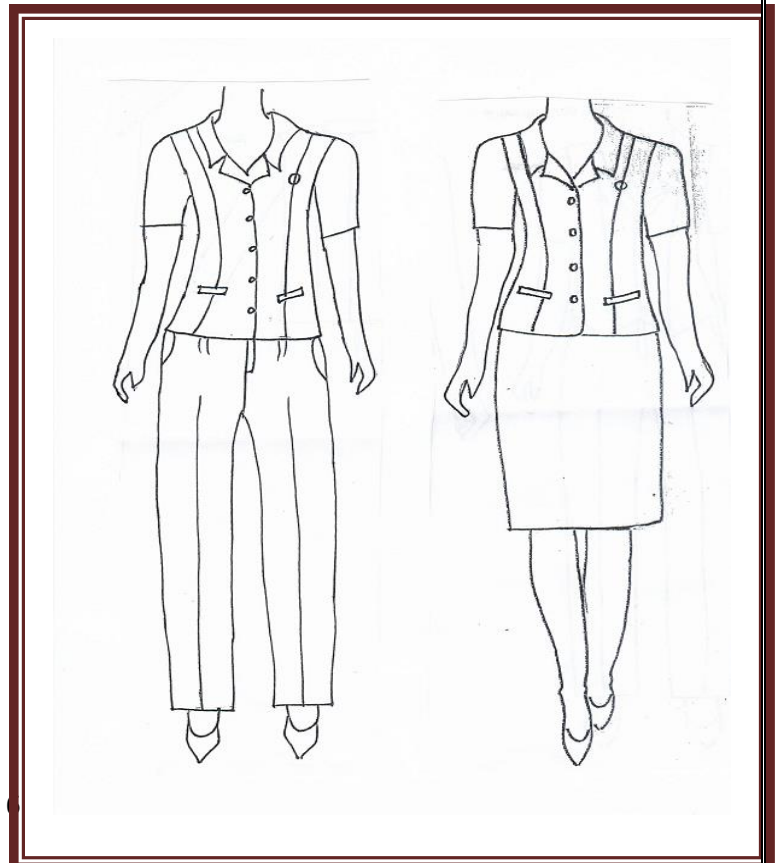
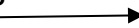
Option A= Blouse, Vest and Skirt
Option B= Dress



Option C= Blazer, Blouse and skirt (or pants)
Option D= Blouse, Vest and Pants



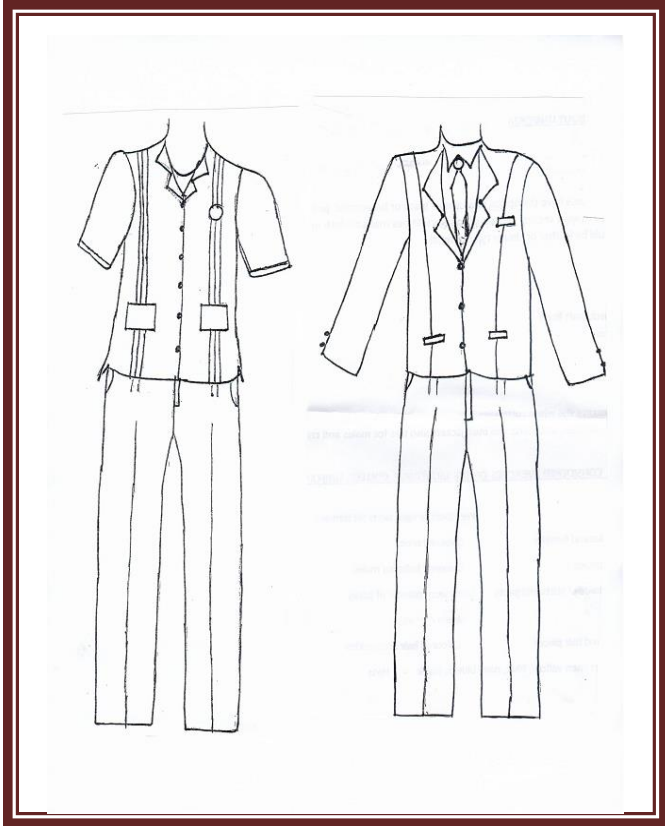
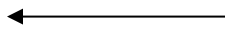
Option E= Blouse Jacket and Pants
Option F= Blouse Jacket and Skirt



UNIFORM OPTIONS- MALE STUDENTS

Option A= Bush Jacket and Pants

Option B= Blazer, Shirt and Tie and Pants



Option C= Shirt, Tie and Pants

Option D= Sweater Vest, Shirt, Tie and
Pants

